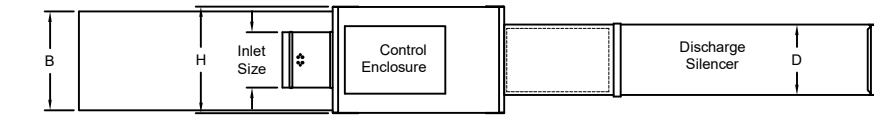


METALAIRE™

Submission: FCQ700-003



Ultra Quiet Series Fan Powered Air Terminal Unit With Electric Heat



Side View Typical For All Sizes

The standard location for control panel is Left Hand. Looking in the direction of airflow, the control panel is on the left.

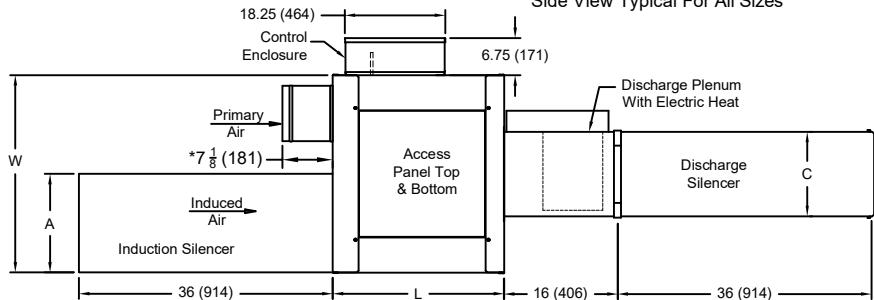
The Discharge Silencer is centered on H and W dimensions

Top & Bottom Mounted Access Panels Allow Unit To Be Hung LH or RH

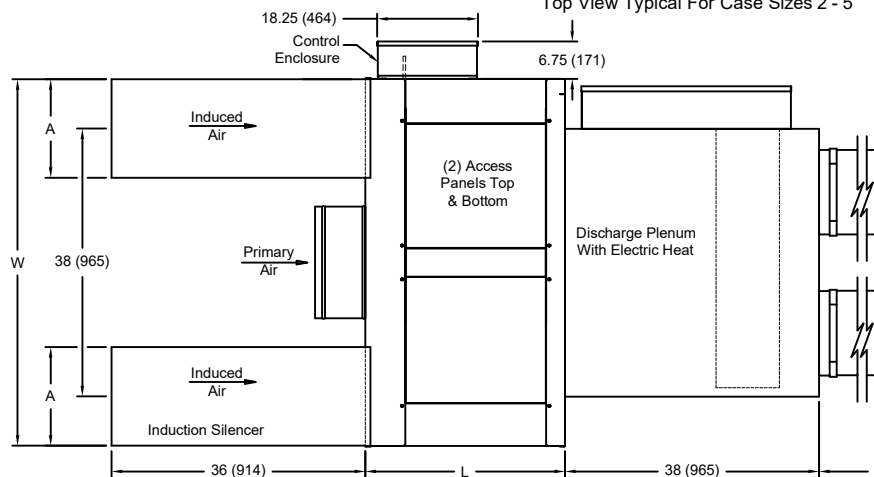
The Induction and Discharge Silencers are shipped loose. A Slip & Drive Adapter(s) is provided and mounted for field connection of the Discharge Silencer(s).

Optional ECM Motor available on Case sizes 2,3,4&6

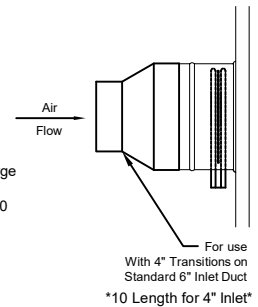
All Dimensions shown in Inches, parentheses () indicate millimeters



Top View Typical For Case Sizes 2 - 5



Top View Typical For Case Sizes 6&7



Case Size	Inlet Size		Horse Power		Unit Dimensions			Induction Silencer		Discharge Silencer	
	Standard	Optional	Standard PSC	ECM	Width	Height	Length	Width	Height	Width	Height
					W	H	L	A	B	C	D
2	8 (203)	4,5,6	1/8	1/3	25	15	24	14	14	12	10
3	10 (254)	4,5,6, 8	1/4	1/2	29	18	28	16	18	14	12 1/2
4	12 (305)	6,8,10	1/3	1	32 1/2	18	28	18	18	16	15
5	12 (305)	8,10	1/3	NA	32 1/2	18	28	18	18	16	15
6	16 (406)	10,12,14	1/3 (QTY 2)	1/2 (QTY 2)	52	18	30	16	18	16	15
7	18x16 (457x406)	12,14,16	3/4 (QTY 2)	NA	52	20	30	16	20	16	15

Standard Construction

- | | | |
|--|--|---|
| <ul style="list-style-type: none"> 1" Dual Density, Coated Fiberglass All Insulations Meet NFPA 90A And UL181 All Fiberglass Insulations have Coated Edges to Prevent Fiber Migration | <ul style="list-style-type: none"> Units are Constructed with 20 Gauge Casing 18 Gauge Equivalent Damper Assembly with Integral Blade Seal 14 x 12 Control Enclosure, Hinged Door | <ul style="list-style-type: none"> Slip & Drive Discharge Connection Induction Silencer Shipped Loose For Field Mounting Discharge Silencer Shipped Loose For Field Mounting Inlet Airflow Sensor |
|--|--|---|